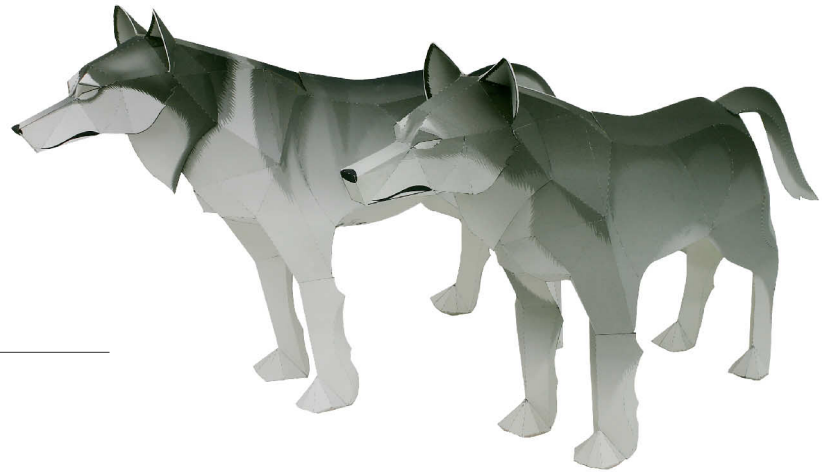


Timber Wolf (Gray Wolf)

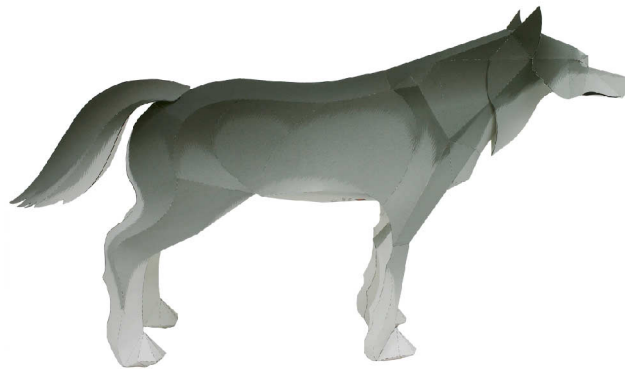
- Classification : Mammal, Carnivore, Canidae
- Height : approximately 80 to 160 cm / 24 to 63 in
- Weight : approximately 18 to 80 kg / 36 to 160 lb
- Coloring : Mainly grey, but rich in variation, ranging through black, brown, red and white.
- Habitat : North American continent, Eurasian continent

The Timber Wolf (also: Grey Wolf) most closely fits the common image of a wolf. The wolf's size and coloring may vary according to its habitat. Once found in many regions throughout the world, hunting, etc., has caused wolf numbers to dwindle and wolves have disappeared completely from many areas of the world.

Timber wolves hunt small animals, such as hares and mice, etc., and also deer, etc. They will also eat plants such as berries, etc. They range widely, traveling at around 8km (4.8 miles) per hour as they hunt for food. In a single day, they may travel great distances, sometimes 100km (sixty miles)



or more. They hunt in packs, some of which can be very large, and use cries, scent and other gestures to communicate with each other. The wolf's howling is believed to be a means of locating other wolves and of announcing the wolf's own location. The wolf is said to be the ancestor of man's best friend, the dog.



Assembly Instructions



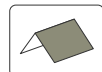
You will need:

scissors, paste, a used ballpoint pen (tracing along the fold lines makes them easier to fold), needle-nosed pliers (useful for picking up small parts)

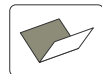


[Caution] Glue, scissors and other tools may be dangerous to young children so be sure to keep them out of the reach of young children.

Firmly fold along the fold line before pasting.



Mountain fold (dotted line)
Make a mountain fold.



Valley fold (dashed and dotted line)
Make a valley fold.



Scissors line (solid line)
Cut along the line.



Cut in line (solid line)
Make a cut.



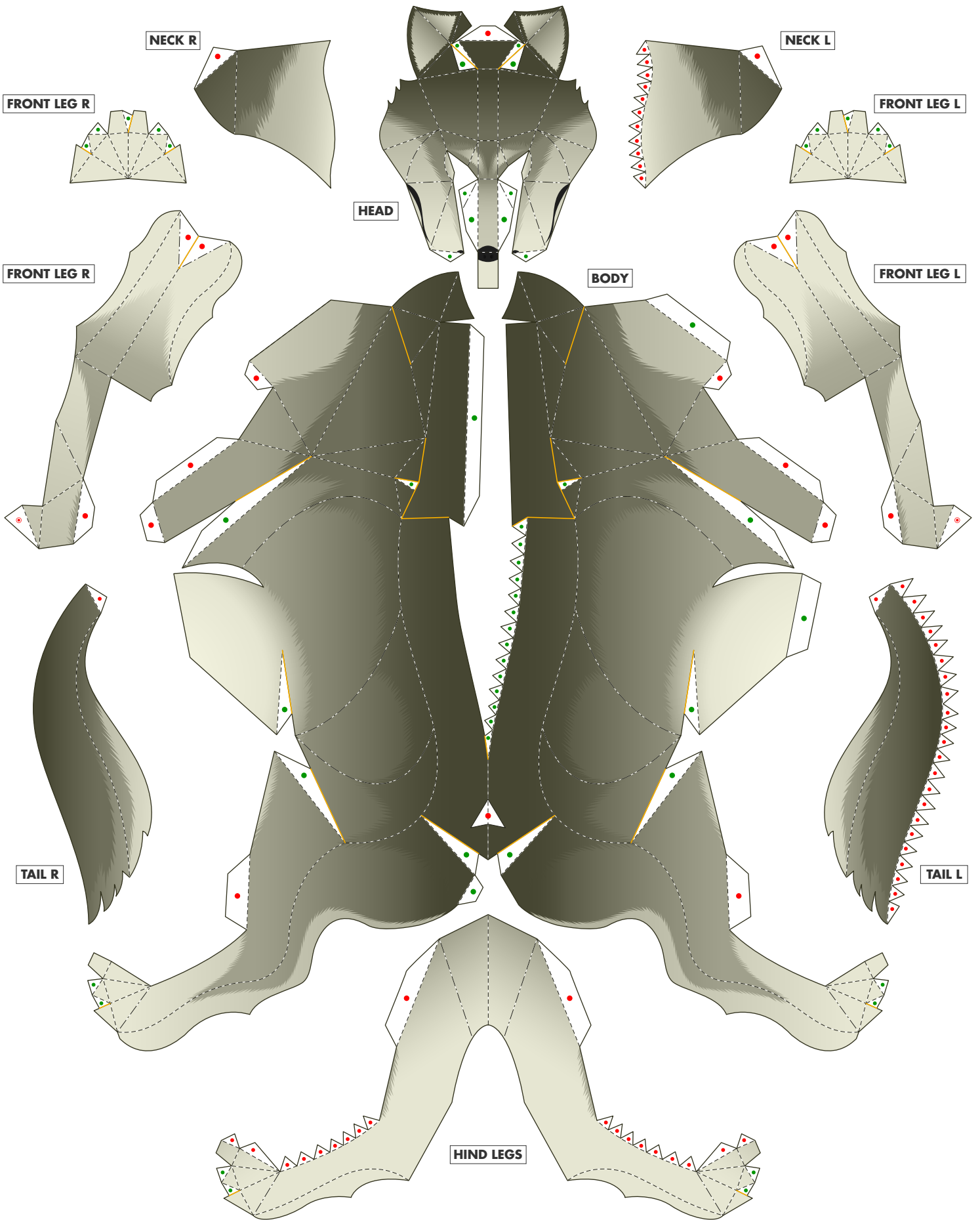
Glue spot (Green dot)
Glue within the same part.

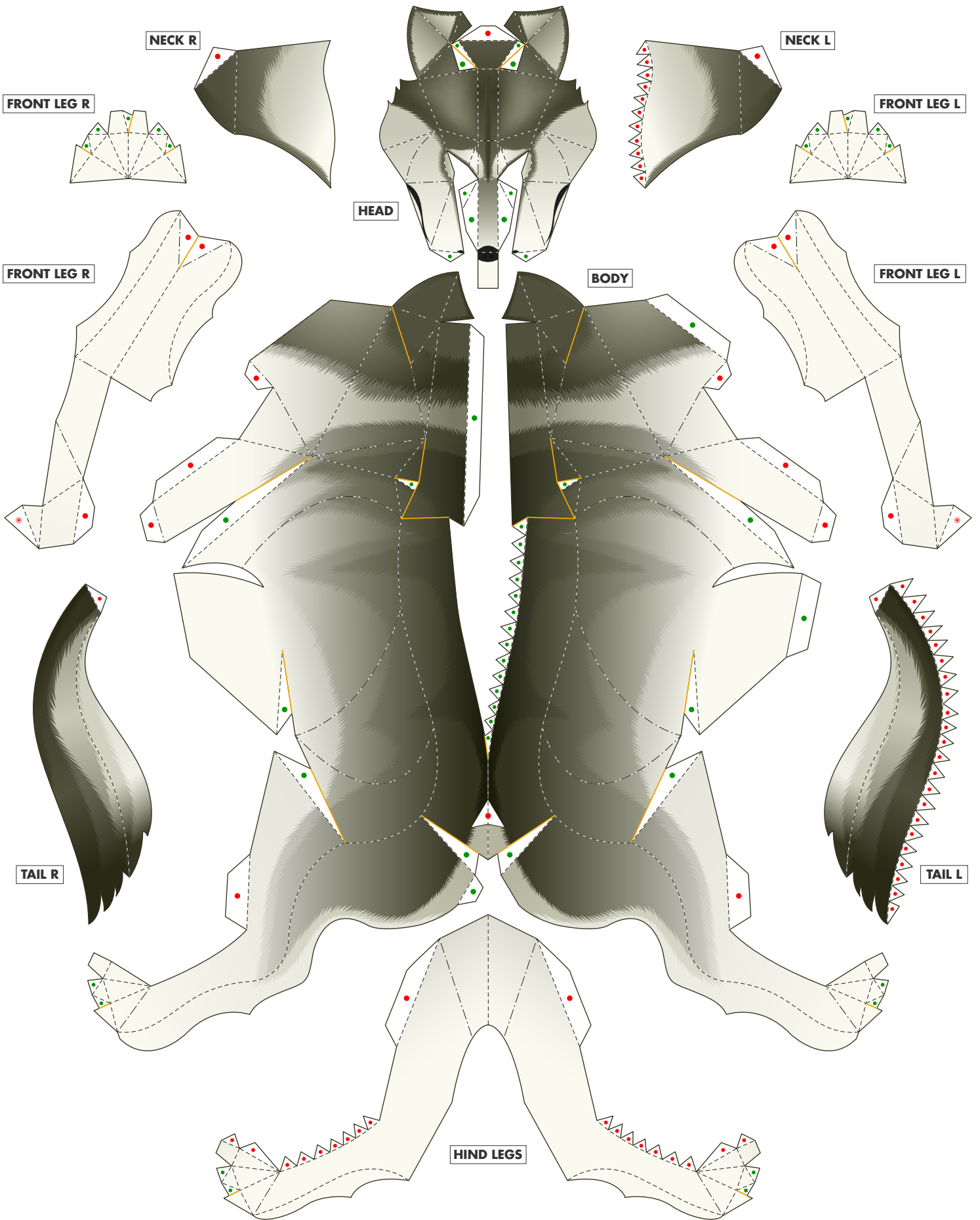


Glue spot (red dot)
Attach this part.

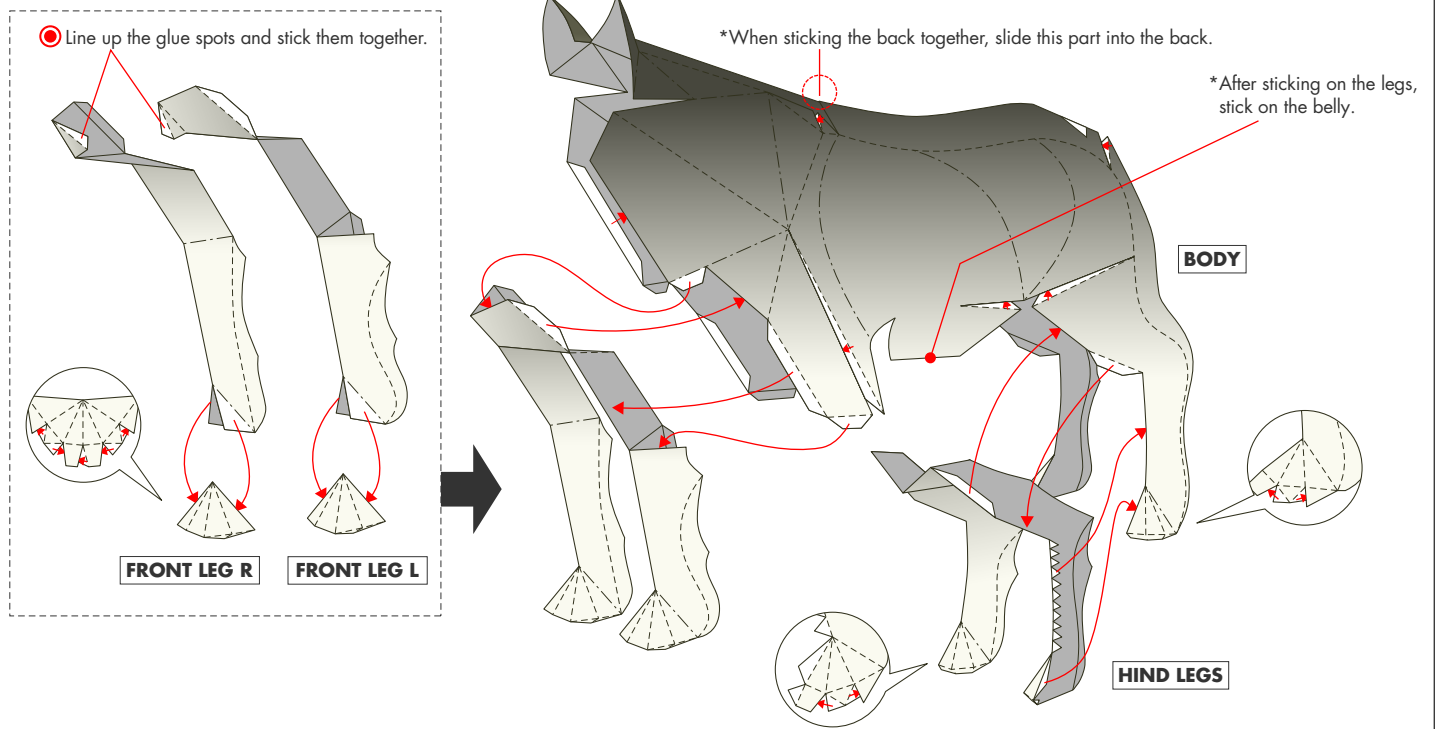


Glue spot (double red circle)
Attach to the glue spot of the other part.





1 Stick on the body, front legs and hind legs.



2 Stick on the head, neck and tail. Completed

